

Classification	
Grade	Highest Quality: 999Elite™
Plateability	Plateable
Viability	>90 %
Confluency	>90 %
Culture Duration	>9 Days
P450 Inducibility	TBD
Transporter Activity	TBD

Donor Demographics	
Gender	Male
Age	36 years
Race	Hispanic
Cause of Death	CVA ANOXIA POSS OD
BMI	44.41
Smoking	No
Alcohol	No
Substance Abuse	No
Medical History	HTN-ALLERGIES
Infectious Diseases	HBV-, HCV-, HIV-, CMV+

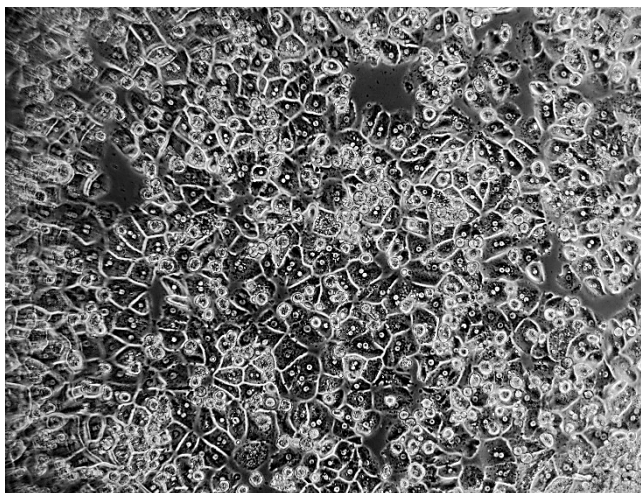
Post-thaw Viability and Yield	
Viability	94%
Yield	5 Million

Storage condition: Hepatocytes are recommended to be stored at < -160°C in the vapor phase of a liquid nitrogen storage unit.

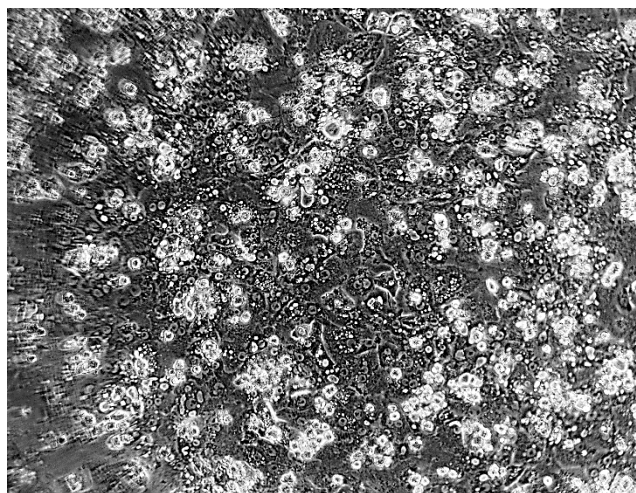
Characterization: Hepatocytes were thawed using 37°C UCRM™ and centrifuged for 10 minutes at 100g. After removing the supernatant, hepatocytes were re-suspended in UPCM™ and counted for viability and yield using the Trypan Blue exclusion method. Cells were plated in a hand-coated collagen 24-well plate at a 0.7 million cells per mL density, 0.5 mL per well, and allowed to attach 4-6 hours prior to a Matrigel® overlay.

PHOTOMICROGRAPHS (100X, PHASE CONTRAST)

Phase Contrast Day 2



Phase Contrast Day 5



Phase Contrast Day 9



Monolayer Comments: HH1196 has high attachment efficiency and a confluency of 100 % by 24 hours. This lot exhibits excellent morphology and remains intact for over 9 days in culture.

IVAL cell culture media and tissue culture plates used in this evaluation:

- Recovery of thawed hepatocytes - Cat. No. 81015 - UCRM™ Universal Cryopreservation Recovery Media, 50 mL tube
- Initial plating of hepatocytes - Cat. No. 81016 - UPCM™ Universal Primary Cell Plating Media, 50 mL tube
- Sandwich culture with 0.25 mg Matrigel® - Cat. No. 81018 - HIM™ Hepatocyte Induction Media, 50 mL tube
- Suspension and incubation of hepatocytes - Cat. No. 81039 - HQM™ Hepatocyte Incubation Media, 50 mL tube
- Collagen coated plates - Cat. No. 71006, 71008 - CellAffix™ 24-well and 96-well Collagen Hand Coated tissue culture plate, 5 plates per pack.